

Easy, efficient and
repeatable filling.



FILLING MACHINES PN

Easy filling of milk products



Add value to milk.

Adequate and quality filling is especially important as it **preserves the quality** – it ensures that the quality of your products is maintained until the end of the shelf life. Filling machines are used for the **efficient, automatic filling of milk products**. You can choose between different filling machines which are **adapted** to the end product, filling volume, packaging and filling rate.



Efficient process as a whole.

- Shorter production time.
- Suitable for the filling of milk and other milk products, including products with pieces of fruit of up to 5 mm.
- Easy to use, no prior knowledge required.
- Higher product yield.



The optimization of production time and costs.

- Partial or full process automation (depending on the model).
- Saves time compared to manual filling. (graph 1)
- The best ratio between quality and price.
- Financial savings. (graph 2)



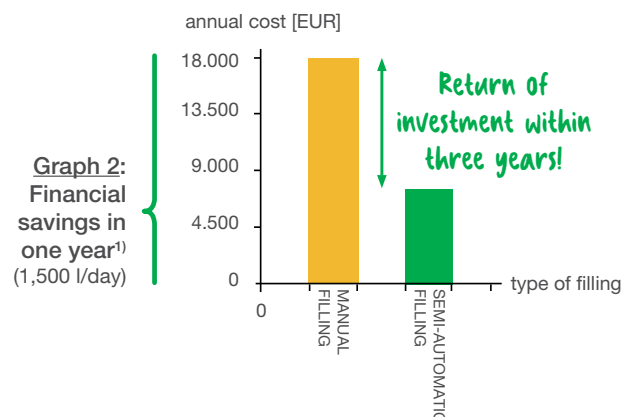
A reliable process and a quality product.

- Constant quality of product is ensured with process repeatability (filling, closing and date imprinting).
- Precise dosing.
- High quality stainless steel, compliant with hygienic standards.



One device for multiple filling needs.

- Easily adjustable filling volume.
- Packaging format exchange (optional).
- Different possible methods for package closing.
- Easy to use.







Increase the added value of your products.

Average labor costs in EU have a constant growth trend. In 2018, the average cost of the hourly rate increased by 38 % compared to 2004. Using a filling machine can significantly **improve your economic efficiency** because only one person is needed to operate the device. Fill products in a **modern, easy and efficient way**.

¹⁾ Cost per working hour is 20 euros.

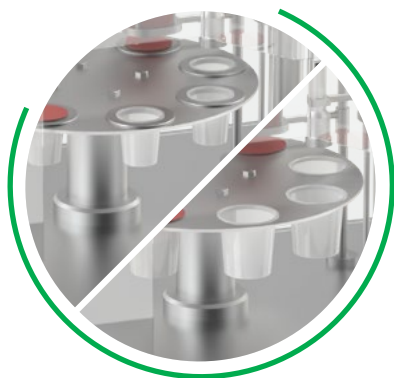
²⁾ Source: Eurostat, <https://ec.europa.eu/eurostat/web/labour-market/labour-costs>

Technical information and dimensions

Model	Product being filled	Packaging being filled	Hourly capacity	Volume of filling	Automatic	Manual	Device weight (kg)	Dimensions l×w×h (mm)
PN 500 TAV 	yogurt	cup with aluminium or plastic cap	500 units/h (200 g)	125–500 g	filling, dosing caps, fitting and welding caps, date imprinting	adding empty and removing full cups, adding caps to the dosing machine	120	1100 x 300 x 1000
PN 500 CS 	solid yogurt, liquid yogurt	cup with aluminium or plastic cap	900 units/h (200 g)	125–500 g	filling, dosing caps, fitting and welding caps, date imprinting	adding empty and removing full cups, adding caps to the dosing machine	210	1100 x 900 x 1700
PN 500 BS 	milk, liquid yogurt, whey	glass bottle or plastic bottle with threaded stopper	500 units/h (1 l)	250–1000 ml	filling, fitting a stopper, screwing the stopper, labelling, date imprinting	adding empty and removing full glass bottles or plastic bottles, adding stoppers to the holder	250	1400 x 900 x 1900
PN 1500 6A 	solid yogurt, liquid yogurt	cup with aluminium or plastic cap	1500 units/h (125 g) 1000 units/h (500 g)	125–500 g	filling, dosing empty and removing full cups, fitting and welding of caps, date imprinting	adding empty cups to the holder, adding caps to the dosing machine, removing the cups from the conveyor belt	300	1500 x 1400 x 1900

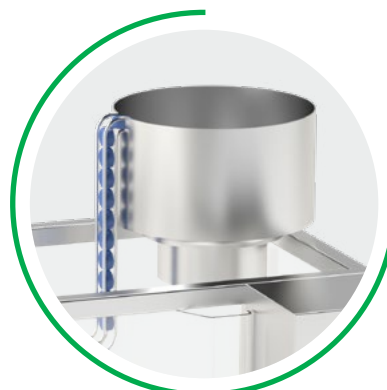
NOTE: All can be filled with pieces of fruit of up to 5 mm.

Optional and additional equipment for filling machines:



Format change

Equipment for changing the format, which enables the use of cups of various dimensions.



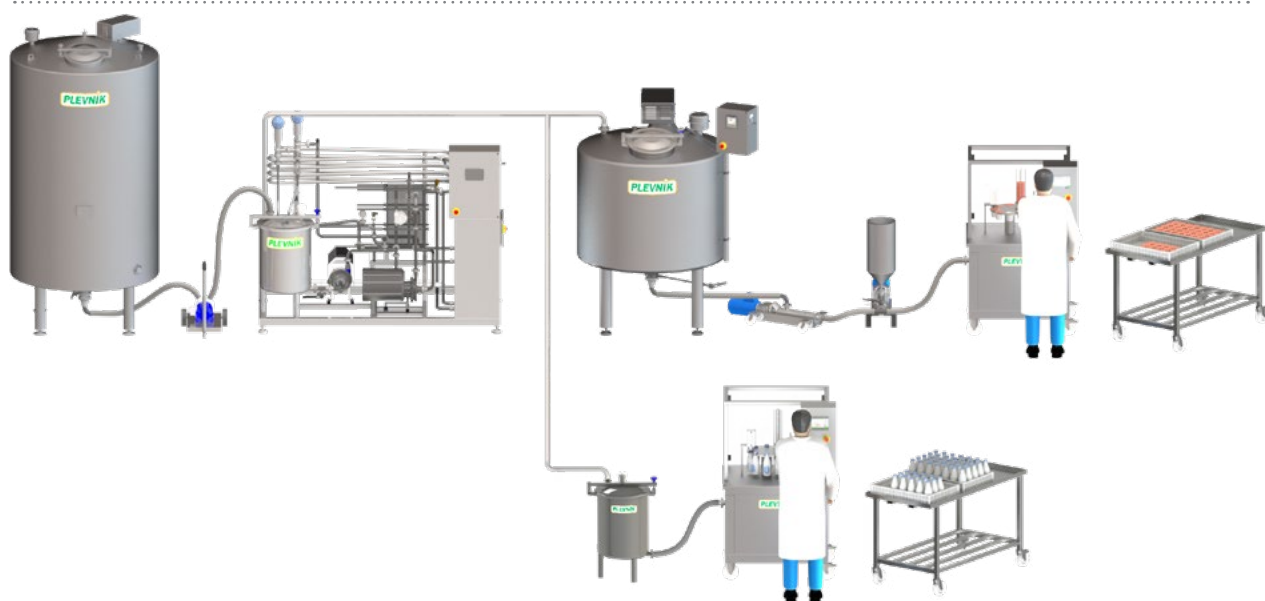
Automatic cap applicator unit³⁾

Automatic cap applicator unit in bulk with vibrating guide positions the caps automatically.

³⁾ Applies to the PN 500 BS model.



Complete solutions. With Plevnik equipment.



PN 03 07 2019 EN



PLEVNIK, d.o.o.
Podsmreka 56
SI 1356 Dobrova
info@plevnik.si
+ 386 (0)1 200 60 80

Together we have created
more than 3,000 successful
cheese-making stories.



www.plevnik.eu

Representative: