

## Modern and easy control of cheese and dairy processes

### MC 500



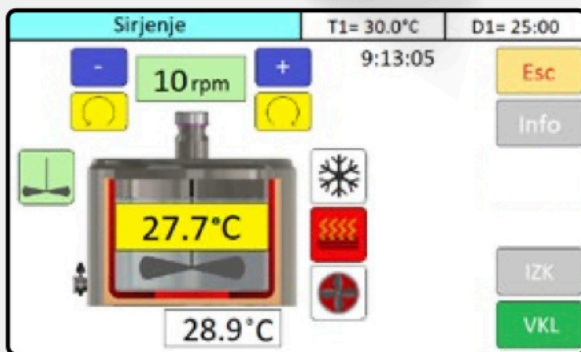
A state-of-the-art controller for **process automation**. Set your unique processes and ensure the **stable quality** of your products.

### MC 500 R



The MC 500 R with an integrated recorder enables the **digital recording** of all parameters of active processes (temperature, stirring etc.).

**Recommended!**



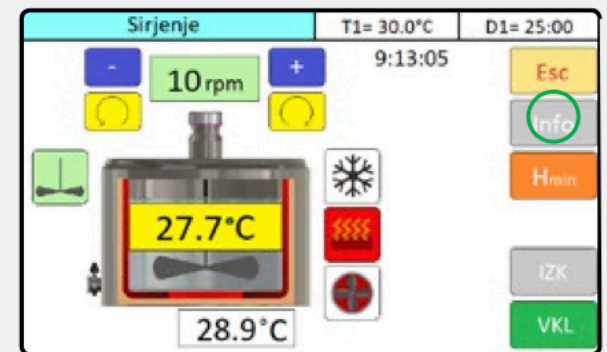
#### Easy, user-friendly operation.

A large 5" colour touchscreen with an excellent overview offers an excellent user experience.



#### Outstanding flexibility and clear overview.

It is possible to choose from **10 programs**, which can be adjusted to suit your technological procedures.



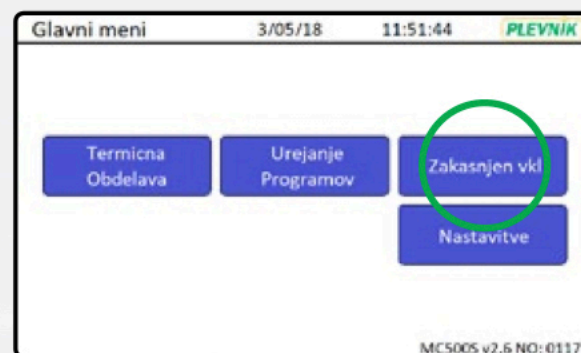
#### Module for choosing the power of heating.

It provides a choice of power settings, which is especially important when processing different quantities. (Additional equipment).



#### Speaks your language.

Supports 7 languages, including English.



#### Energy efficient, lowers costs, saves time.

A start delay function allows the milk to cool overnight (when power is cheaper), and the thermal treatment process can be scheduled to start automatically at the desired time.

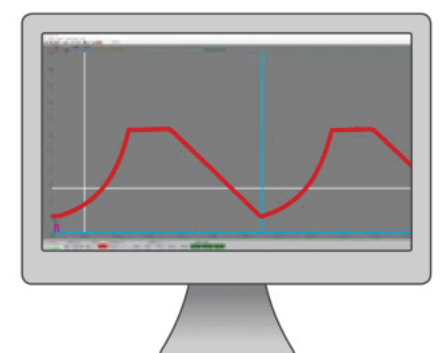
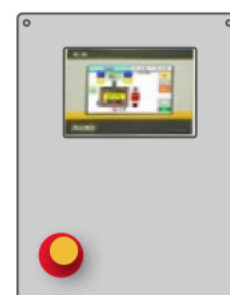
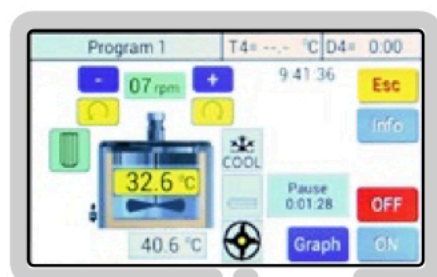
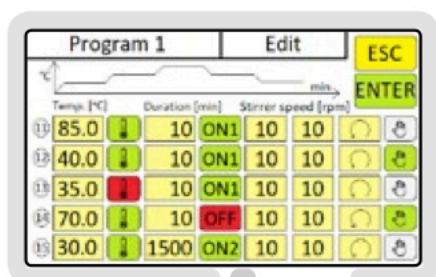


#### Fully recorded processes – documents temperature and processes. (MC 500 R)

## ADVANCED PROGRAMS FOR ADVANCED/ PROFESSIONAL USERS

### Adaptable to your unique recipes

Adaptable programs **support up to 15 steps**, including the basic settings, such as temperature, time, stirring speed and direction, as well as turning on the "gentle" temperature retention mode (stage-controlled temperature retention during fermentation, cheese making etc.) and turning off the temperature regulation.



## MC 500 R - A MODERN APPROACH TO PROCESS CONTROL WITH AN INTEGRATED RECORDER

### Process recording

The MC 500 R controller has a built-in recorder, which **automatically records all active processes**, in turn making it easier to control them as well as offering an overview of completed processes. Records can be easily transferred via an SD card to the computer, where you can view and save them with the dedicated software.